

## DEMOGRAPHIC DATA

© 2024 All rights reserved

Ribbon Demographics, LLC

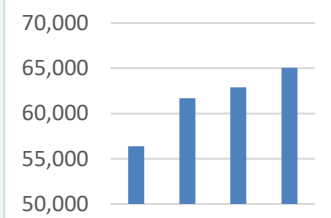
[www.ribbondata.com](http://www.ribbondata.com)

Tel: 916-880-1644

### Market Area

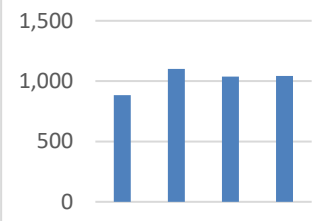
#### Total Population

Census 2010	56,388	
Census 2020	61,685	
Current Year Estimates 2024	62,867	
Five-Year Projections 2029	65,027	
<i>Change 2010 - 2020</i>	5,297	9.4%
<i>Estimated Change 2020 - 2024</i>	1,182	1.9%
<i>Projected Change 2024 - 2029</i>	2,160	3.4%



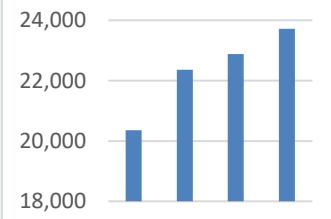
#### Group Quarters Population

Census 2010	883	
Census 2020	1,102	
Current Year Estimates 2024	1,037	
Five-Year Projections 2029	1,043	
<i>Change 2010 - 2020</i>	219	24.8%
<i>Estimated Change 2020 - 2024</i>	-65	-5.9%
<i>Projected Change 2024 - 2029</i>	6	0.6%

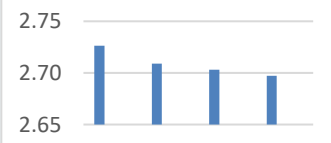


#### Total Households

Census 2010	20,359	
Census 2020	22,364	
Current Year Estimates 2024	22,875	
Five-Year Projections 2029	23,723	
<i>Change 2010 - 2020</i>	2,005	9.8%
<i>Estimated Change 2020 - 2024</i>	511	2.3%
<i>Projected Change 2024 - 2029</i>	848	3.7%

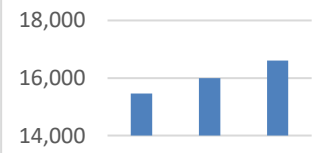


Average Household Size 2010	2.73
Average Household Size 2020	2.71
Average Household Size 2024	2.70
Average Household Size 2029	2.70



#### Total Families

Census 2020	15,457	
Current Year Estimates 2024	15,998	
Five-Year Projections 2029	16,608	
<i>Estimated Change 2020 - 2024</i>	541	3.5%
<i>Projected Change 2024 - 2029</i>	610	3.8%



DEMOGRAPHIC DATA

© 2024 All rights reserved

Ribbon Demographics, LLC

www.ribbondata.com

Tel: 916-880-1644

Market Area

Population By Age

	Census 2020		2024 Estimates		2029 Projections	
0 to 4 Years	3,853	6.2%	3,828	6.1%	3,845	5.9%
5 to 9 Years	4,330	7.0%	3,980	6.3%	3,888	6.0%
10 to 14 Years	4,540	7.4%	4,397	7.0%	4,050	6.2%
15 to 17 Years	2,796	4.5%	2,684	4.3%	2,690	4.1%
18 to 20 Years	2,280	3.7%	2,776	4.4%	2,880	4.4%
21 to 24 Years	2,742	4.4%	3,255	5.2%	3,681	5.7%
25 to 34 Years	8,501	13.8%	7,724	12.3%	7,749	11.9%
35 to 44 Years	9,113	14.8%	9,143	14.5%	8,804	13.5%
45 to 54 Years	7,432	12.0%	7,869	12.5%	8,704	13.4%
55 to 64 Years	7,608	12.3%	7,314	11.6%	7,170	11.0%
65 to 74 Years	5,576	9.0%	6,283	10.0%	6,754	10.4%
75 to 84 Years	2,116	3.4%	2,783	4.4%	3,822	5.9%
85 Years and Up	798	1.3%	831	1.3%	990	1.5%
Median Age (Years)	37.0		38.1		39.2	

Households by Income

	2024 Estimates		2029 Projections	
Less than \$15,000	1,125	4.9%	1,038	4.4%
\$15,000 - \$24,999	1,180	5.2%	1,088	4.6%
\$25,000 - \$34,999	1,005	4.4%	1,007	4.2%
\$35,000 - \$49,999	2,047	8.9%	1,814	7.6%
\$50,000 - \$74,999	3,533	15.4%	3,197	13.5%
\$75,000 - \$99,999	3,642	15.9%	3,550	15.0%
\$100,000 - \$124,999	2,786	12.2%	2,946	12.4%
\$125,000 - \$149,999	2,349	10.3%	2,421	10.2%
\$150,000 - \$199,999	2,479	10.8%	2,945	12.4%
\$200,000 - \$249,999	1,230	5.4%	1,612	6.8%
\$250,000 - \$499,999	1,042	4.6%	1,444	6.1%
\$500,000 and up	457	2.0%	661	2.8%
Median Income	\$92,487		\$101,421	

Households by Tenure

2020 Owner	14,738	65.9%
2020 Renter	7,626	34.1%
2024 Owner	15,077	65.9%
2024 Renter	7,798	34.1%
2029 Owner	15,646	66.0%
2029 Renter	8,077	34.0%

Population By Race and Ethnicity

	Census 2020		2024 Estimates		2029 Projections	
White Alone	42,038	68.1%	41,292	65.7%	40,570	62.4%
Black/African American Alone	335	0.5%	389	0.6%	468	0.7%
American Indian/Alaskan Native Alone	870	1.4%	923	1.5%	1,004	1.5%
Asian Alone	411	0.7%	424	0.7%	445	0.7%
Native Hawaiian/Pacific Islander Alone	40	0.1%	47	0.1%	57	0.1%
Some Other Race Alone	9,751	15.8%	10,528	16.7%	11,705	18.0%
Two or More Races	8,240	13.4%	9,264	14.7%	10,778	16.6%
Hispanic/Latino	19,564	31.7%	21,186	33.7%	23,634	36.3%

## DEMOGRAPHIC DATA

© 2024 All rights reserved

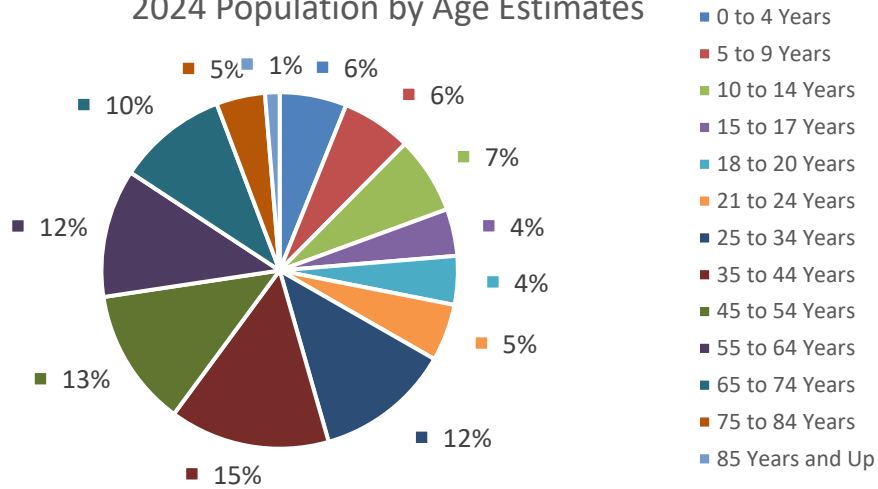
Ribbon Demographics, LLC

[www.ribbondata.com](http://www.ribbondata.com)

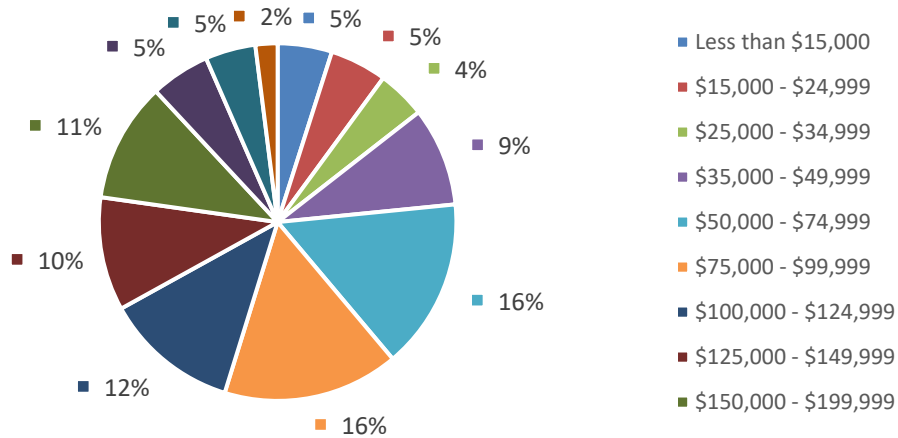
Tel: 916-880-1644

### Market Area

#### 2024 Population by Age Estimates



#### 2024 Households by Income Estimates



#### 2024 Population by Race Estimates

